

CNT 4714: Enterprise Computing Spring 2010

GUI Components: Part 2

Instructor : Dr. Mark Llewellyn
markl@cs.ucf.edu
HEC 236, 407-823-2790
<http://www.cs.ucf.edu/courses/cnt4714/spr2010>

School of Electrical Engineering and Computer Science
University of Central Florida



Advanced GUIs

- In the notes up to this point, we have examined a number of different capabilities for GUI programming that are available in Java. Most of the examples have simply illustrated the some of the options which are available for designing and manipulating GUIs.
- At this point, we'll begin to look at more sophisticated applications for the GUIs which are more along the lines of what you will be programming in this course.
- As before, many of the examples in the notes will simply illustrate one option from many that are available. I encourage you to look at the Java documentation and experiment either by modifying the code from the notes or constructing your own GUIs using some of these additional options.

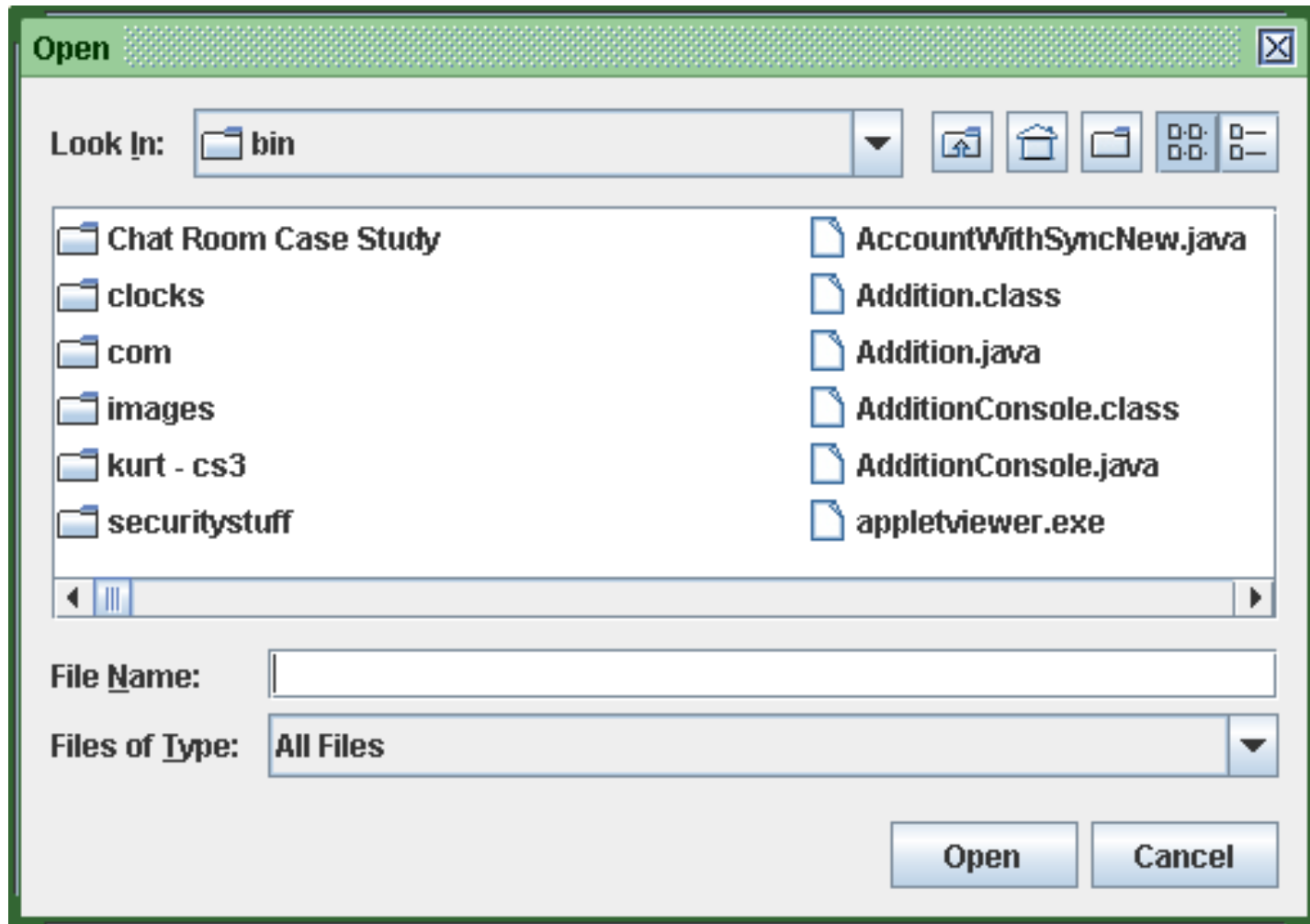


File Choosers

- File choosers provide a GUI for navigating the file system and then selecting a file or directory from a list (or by directly entering the name of a file or directory).
- The `JFileChooser` API makes it easy to bring up open and save dialogs. The look and feel determines what the standard dialogs look like and how they differ.
- In the Java look and feel, the save dialog looks the same as the open dialog except for the title on the dialog's window and the text on the button that approves the operation.
- The next slide illustrates the Java look and feel's standard open dialog.



Standard Java Look and Feel Open File Dialog



File Chooser Demo

- The code on the following page demonstrates some of the features of the JFileChooser open and save dialogs.
- Try some of the options which are listed in the comments in the code.



FileChooserDemo

```
import java.io.*;
import java.awt.*;
import java.awt.event.*;
import javax.swing.*;
import javax.swing.filechooser.*;

/*
 * FileChooserDemo.java is an application that uses these files:
 * images/Open16.gif
 * images/Save16.gif
 */
public class FileChooserDemo extends JPanel implements ActionListener {
    static private final String newline = "\n";
    JButton openButton, saveButton;
    JTextArea log;
    JFileChooser fc;

    public FileChooserDemo() {
        super(new BorderLayout());

        //Create the log first, because the action listeners need to refer to it.
        log = new JTextArea(5,20);
        log.setMargin(new Insets(5,5,5,5));
        log.setEditable(false);
        JScrollPane logScrollPane = new JScrollPane(log);
```



//Create a file chooser

```
fc = new JFileChooser("."); //this constructor allows you to specify the directory to be opened
    // "." is the current default directory, ".." would be the parent of the
    //default or current directory.
```

```
//Uncomment one of the following lines to try a different
//file selection mode. The first allows just directories
//to be selected (and, at least in the Java look and feel,
//shown). The second allows both files and directories
//to be selected. If you leave these lines commented out,
//then the default mode (FILES_ONLY) will be used.
//
```

```
//fc.setSelectionMode(JFileChooser.DIRECTORIES_ONLY);
//fc.setSelectionMode(JFileChooser.FILES_AND_DIRECTORIES);
```

```
//Create the open button. We use the image from the JLF
//Graphics Repository (but we extracted it from the jar).
openButton = new JButton("Open a File...", createImageIcon("images/Open16.gif"));
openButton.addActionListener(this);
```

```
// Create the save button. We use the image from the JLF
// Graphics Repository (but we extracted it from the jar).
saveButton = new JButton("Save a File...", createImageIcon("images/Save16.gif"));
saveButton.addActionListener(this);
```

```
// For layout purposes, put the buttons in a separate panel
JPanel buttonPanel = new JPanel(); //use FlowLayout
buttonPanel.add(openButton);
buttonPanel.add(saveButton);
```

Change the argument to the file chooser constructor to set the default directory which is opened.

Uncomment these lines to change the file selection mode.



```

//Add the buttons and the log to this panel.
add(buttonPanel, BorderLayout.PAGE_START);
add(logScrollPane, BorderLayout.CENTER);
}
public void actionPerformed(ActionEvent e) {
//Handle open button action.
if (e.getSource() == openButton) {
    int returnVal = fc.showOpenDialog(FileChooserDemo.this);
    if (returnVal == JFileChooser.APPROVE_OPTION) {
        File file = fc.getSelectedFile();
        //This is where a real application would open the file.
        log.append("Opening: " + file.getName() + "." + newline);
    } else {
        log.append("Open command cancelled by user." + newline);
    }
    log.setCaretPosition(log.getDocument().getLength());

//Handle save button action.
} else if (e.getSource() == saveButton) {
    int returnVal = fc.showSaveDialog(FileChooserDemo.this);
    if (returnVal == JFileChooser.APPROVE_OPTION) {
        File file = fc.getSelectedFile();
        //This is where a real application would save the file.
        log.append("Saving: " + file.getName() + "." + newline);
    } else {
        log.append("Save command cancelled by user." + newline);
    }
    log.setCaretPosition(log.getDocument().getLength());
}
}

```




```

}
/** Returns an ImageIcon, or null if the path was invalid. */
protected static ImageIcon createImageIcon(String path) {
    java.net.URL imgURL = FileChooserDemo.class.getResource(path);
    if (imgURL != null) {
        return new ImageIcon(imgURL);
    } else {
        System.err.println("Couldn't find file: " + path);
        return null;
    }
}

// Create the GUI and show it. For thread safety, this method should be invoked from the
// event-dispatching thread.
private static void createAndShowGUI() {
    //Make sure we have nice window decorations.
    JFrame.setDefaultLookAndFeelDecorated(true);
    JDialog.setDefaultLookAndFeelDecorated(true);
    //Create and set up the window.
    JFrame frame = new JFrame("FileChooserDemo");
    frame.setDefaultCloseOperation(JFrame.EXIT_ON_CLOSE);
    //Create and set up the content pane.
    JComponent newContentPane = new FileChooserDemo();
    newContentPane.setOpaque(true); //content panes must be opaque
    frame.setContentPane(newContentPane);
    //Display the window.
    frame.pack();
    frame.setVisible(true);
}

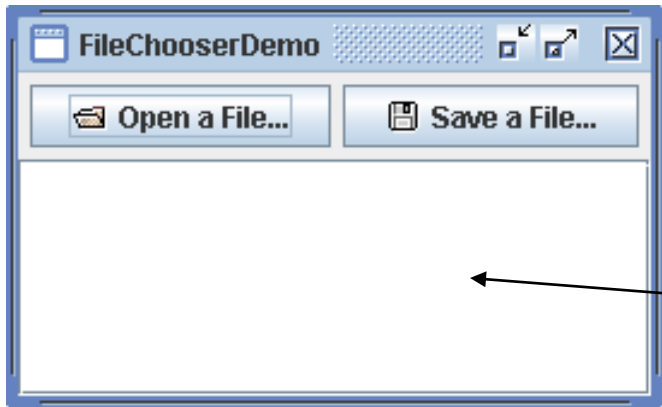
```

```

public static void main(String[] args) {
    //Schedule a job for the event-dispatching
    thread:
    //creating and showing this application's GUI.
    javax.swing.SwingUtilities.invokeLater(new
    Runnable() {
        public void run() {
            createAndShowGUI();
        }
    });
}

```

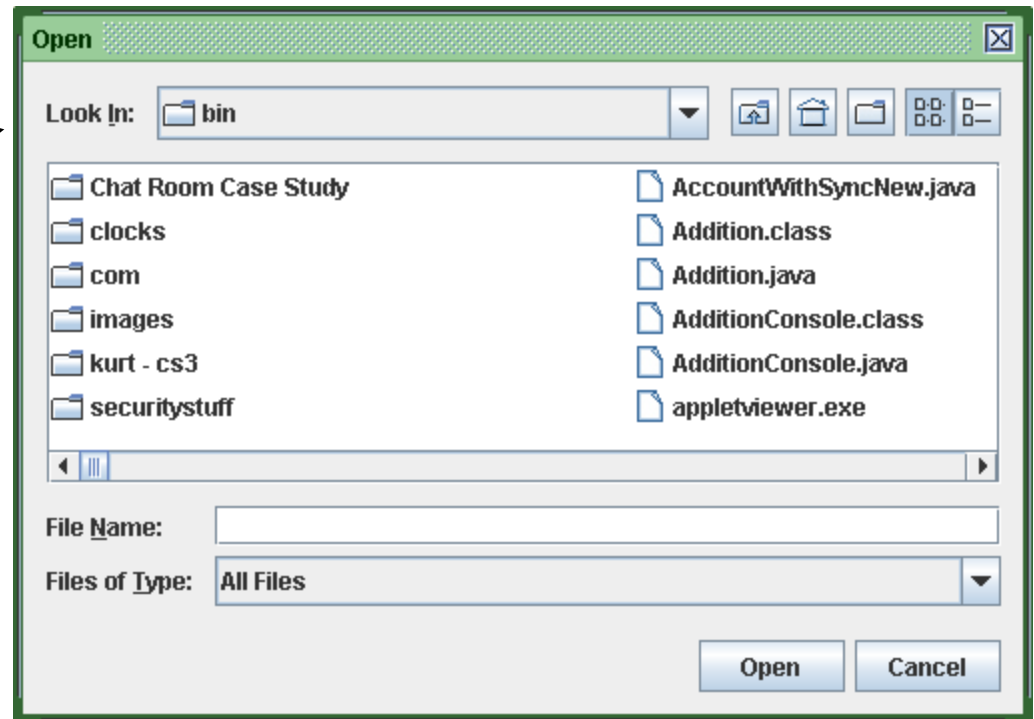


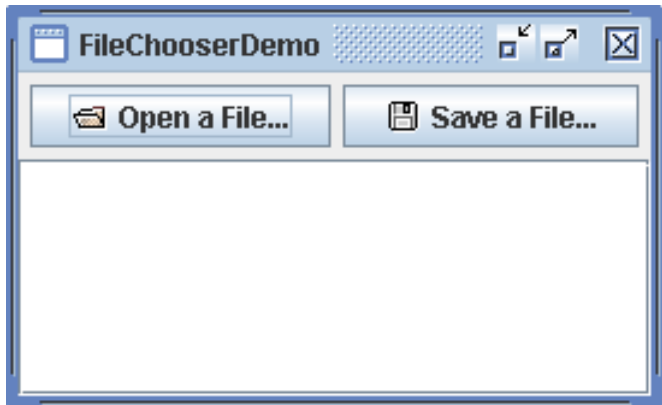


Initial FileChooserDemo dialog

This window is used to return status messages from the FileChooser

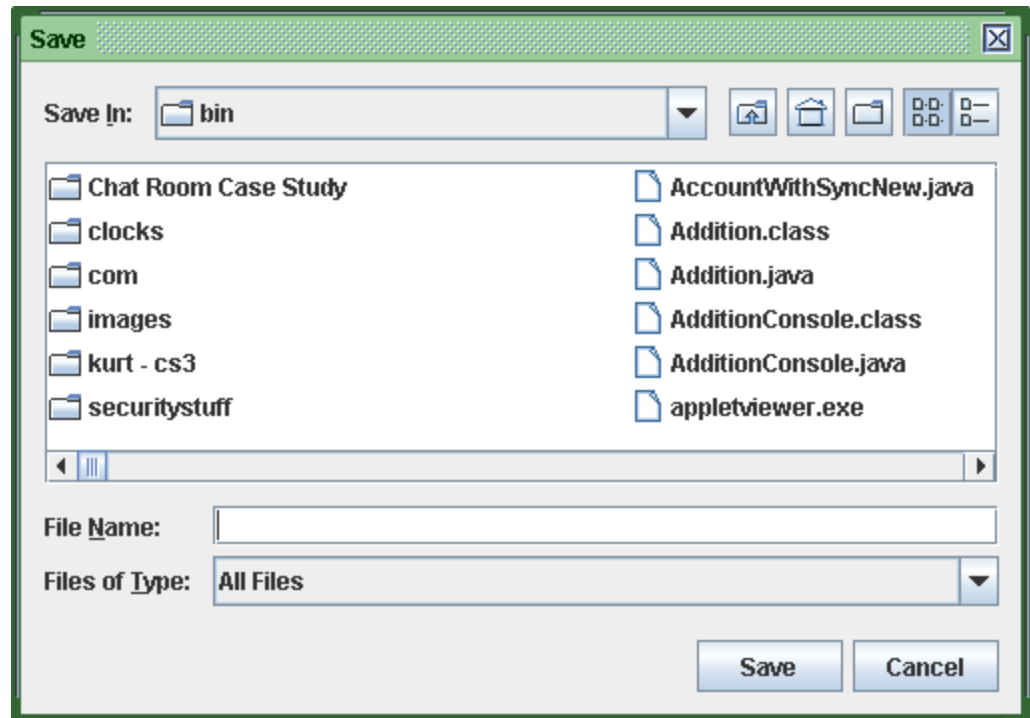
Open dialog which appears after user clicks open button. Note that the argument to the showOpenDialog method specifies the parent component for the dialog. The parent component affects the position of the dialog and the frame that it depends on. The Java look and feel places the dialog directly over the parent component.





Initial
FileChooserDemo
dialog

Save dialog which appears
after user clicks save button.
Note that cursor is
automatically placed in the file
name box to await user entry
of the name of the file to be
saved.



Swing Text Components and HTML Rendering

- Some of our previous examples illustrated the two of the three basic text components used for presenting and editing text. We've already seen `JTextField` and `JTextArea`, and now we'll look at a more sophisticated text component called a `JEditorPane`.
- `JEditorPane` provides enhanced text-rendering capabilities. It supports styled documents that include formatting, font and color information.
- `JEditorPane` is capable of rendering HTML documents as well as Rich Text Format (RTF) documents.
- The following example utilizes the `JEditorPane` class to render HTML pages for a simple web browser application.



The Components of the Web Browser

- The next example consists of three basic components:
 1. A `WebBrowserPane` which is an extension of class `JEditorPane`. `WebBrowserPane` creates a web browsing component that maintains a history of visited URLs.
 2. `WebToolBar` is an extension of class `JToolBar` (`JToolBar` allows developers to add toolbars to GUIs to provide common functions such as cut, copy, paste, and navigation). This class provides commonly used navigation components for a `WebBrowserPane`. In this case a back button and forward button are provided.
 3. Class `WebBrowser` uses a `WebBrowserPane` and a `WebToolBar` to create a simple web-browser application.



WebBrowserPane Class

```
// WebBrowserPane.java
// WebBrowserPane is a simple Web-browsing component that
// extends JEditorPane and maintains a history of visited URLs.
// Java core packages
import java.util.*;
import java.net.*;
import java.io.*;
// Java extension packages
import javax.swing.*;
import javax.swing.event.*;
```

```
public class WebBrowserPane extends JEditorPane {
```

```
    private List history = new ArrayList();
    private int historyIndex;
```

```
    // WebBrowserPane constructor
```

```
    public WebBrowserPane()
```

```
    {
        // disable editing to enable hyperlinks
        setEditable( false );
    }
```

```
    // display given URL and add it to history
```

```
    public void goToURL( URL url )
```

```
    {
        displayPage( url );
    }
```

JEditorPane enables hyperlinks in HTML documents only if the JEditorPane is not editable.



```

    history.add( url );
    historyIndex = history.size() - 1;
}
// display next history URL in editorPane
public URL forward()
{
    historyIndex++;
    // do not go past end of history
    if ( historyIndex >= history.size() )
        historyIndex = history.size() - 1;

    URL url = ( URL ) history.get( historyIndex );
    displayPage( url );
    return url;
}
// display previous history URL in editorPane
public URL back()
{
    historyIndex--;
    // do not go past beginning of history
    if ( historyIndex < 0 )
        historyIndex = 0;
    // display previous URL
    URL url = ( URL ) history.get( historyIndex );
    displayPage( url );
    return url;
}

```

```

// display given URL in JEditorPane
private void displayPage( URL pageURL )
{
    // display URL
    try {
        setPage( pageURL );
    }
    // handle exception reading from URL
    catch ( IOException ioException ) {
        ioException.printStackTrace();
    }
}
}

```



WebToolBar Class

```
// WebToolBar.java
// WebToolBar is a JToolBar subclass that contains components
// for navigating a WebBrowserPane. WebToolBar includes back
// and forward buttons and a text field for entering URLs.
// Java core packages
import java.awt.*;
import java.awt.event.*;
import java.net.*;
// Java extension packages
import javax.swing.*;
import javax.swing.event.*;

public class WebToolBar extends JToolBar implements HyperlinkListener {
    private WebBrowserPane webBrowserPane;
    private JButton backButton;
    private JButton forwardButton;
    private JTextField urlTextField;
    // WebToolBar constructor
    public WebToolBar( WebBrowserPane browser )
    {
        super( "Web Navigation" );
        // register for HyperlinkEvents
        webBrowserPane = browser;
        webBrowserPane.addHyperlinkListener( this );
        // create JTextField for entering URLs
        urlTextField = new JTextField( 25 );
    }
}
```




```

urlTextField.addActionListener(
    new ActionListener() {
        // navigate webBrowser to user-entered URL
        public void actionPerformed( ActionEvent event )
        {
            // attempt to load URL in webBrowserPane
            try {
                URL url = new URL( urlTextField.getText() );
                webBrowserPane.goToURL( url );
            }
            // handle invalid URL
            catch ( MalformedURLException urlException ) { urlException.printStackTrace();
            }
        }
    }
);

// create JButton for navigating to previous history URL
backButton = new JButton( new ImageIcon( getClass().getResource( "images/back.gif" ) ) );
backButton.addActionListener(
    new ActionListener() {
        public void actionPerformed( ActionEvent event )
        {
            // navigate to previous URL
            URL url = webBrowserPane.back();
            // display URL in urlTextField
            urlTextField.setText( url.toString() );
        }
    }
);

```



```

// create JButton for navigating to next history URL
forwardButton = new JButton( new ImageIcon( getClass().getResource( "images/forward.gif" ) ) );
forwardButton.addActionListener(
    new ActionListener() {
        public void actionPerformed((ActionEvent event) )
        {
            // navigate to next URL
            URL url = webBrowserPane.forward();
            // display new URL in urlTextField
            urlTextField.setText( url.toString() );
        }
    }
);
// add JButtons and JTextField to WebToolBar
add( backButton );    add( forwardButton );    add( urlTextField );
} // end WebToolBar constructor

// listen for HyperlinkEvents in WebBrowserPane
public void hyperlinkUpdate( HyperlinkEvent event )
{
    // if hyperlink was activated, go to hyperlink's URL
    if ( event.getEventType() == HyperlinkEvent.EventType.ACTIVATED ) {
        // get URL from HyperlinkEvent
        URL url = event.getURL();
        // navigate to URL and display URL in urlTextField
        webBrowserPane.goToURL( url );
        urlTextField.setText( url.toString() );
    } } }

```



WebBrowser Class

```
// WebBrowser.java
// WebBrowser is an application for browsing Web sites using
// a WebToolBar and WebBrowserPane.
// Java core packages
import java.awt.*;
import java.awt.event.*;
import java.net.*;
// Java extension packages
import javax.swing.*;
import javax.swing.event.*;
```

```
public class WebBrowser extends JFrame {
    private WebToolBar toolBar;
    private WebBrowserPane browserPane;
    // WebBrowser constructor
    public WebBrowser()
    {
        super( "CNT 4714 Simple Web Browser" );
        // create WebBrowserPane and WebToolBar for navigation
        browserPane = new WebBrowserPane();
        toolBar = new WebToolBar( browserPane );
        // lay out WebBrowser components
        Container contentPane = getContentPane();
        contentPane.add( toolBar, BorderLayout.NORTH );
        contentPane.add( new JScrollPane( browserPane ), BorderLayout.CENTER );
    }
}
```

The previously defined classes

Recall that the default layout manager for JFrame is a BorderLayout.




```
// execute application
```

```
public static void main( String args[] )  
{  
    WebBrowser browser = new WebBrowser();  
    browser.setDefaultCloseOperation( EXIT_ON_CLOSE );  
    browser.setSize( 640, 480 );  
    browser.setVisible( true );  
}  
}
```

WebToolBar
instance



CNT 4714 Simple Web Browser



CNT 4714 - Enterprise Computing - Spring 2010

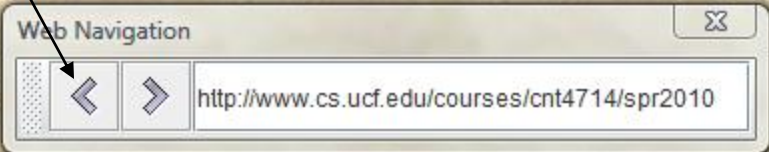
Tuesday & Thursday 10:30-11:45 am ENG2 105

Instructor: [Dr. Mark Llewellyn](#)
Office: HEC 236
Office Hours: M & W 2:30-4:30 pm and T & TH 1:00-3:00 pm
(407) 823-2790
Email to: markl@cs.ucf.edu

TA Information
TBA
Office Hours: please email for appointment
Email: (Please use subject: CNT 4714) markl@cs.ucf.edu

[Course Calendar](#)
[Syllabus](#)
[Lecture Notes](#)
[Course Assignments](#)
[Code Examples](#)

Web Navigation



http://www.cs.ucf.edu/courses/cnt4714/spr2010

WebToolBar instance has been moved by the user.



JSplitPane and JTabbedPane Components

- JSplitPane and JTabbedPane are container components that enable application developers to present large amounts of information in a small screen area.
- JSplitPane handles this by dividing two components with a divider the user can reposition to expand and contract the visible area of the JSplitPane's child components.
 - A JSplitPane can contain only two child components, however, each child component may contain nested components.
- We'll look at an example using a JSplitPane component and then we'll examine the JTabbedPane component.



FavoritesWebBrowser Class

```
// FavoritesWebBrowser.java
// FavoritesWebBrowser is an application for browsing Web sites
// using a WebToolBar and WebBrowserPane and displaying an HTML
// page containing links to favorite Web sites.
// Java core packages
import java.awt.*;
import java.awt.event.*;
import java.net.*;
// Java extension packages
import javax.swing.*;
import javax.swing.event.*;

public class FavoritesWebBrowser extends JFrame {
    private WebToolBar toolBar;
    private WebBrowserPane browserPane;
    private WebBrowserPane favoritesBrowserPane;

    // WebBrowser constructor
    public FavoritesWebBrowser()
    {
        super( "CNT 4714 - Favorites Web Browser" );
        // create WebBrowserPane and WebToolBar for navigation
        browserPane = new WebBrowserPane();
        toolBar = new WebToolBar( browserPane );

        // create WebBrowserPane for displaying favorite sites
        favoritesBrowserPane = new WebBrowserPane();
    }
}
```




```

// add WebToolBar as listener for HyperlinkEvents in favoritesBrowserPane
favoritesBrowserPane.addHyperlinkListener( toolBar );
// display favorites.html in favoritesBrowserPane
favoritesBrowserPane.goToURL(
    getClass().getResource( "favorites.html" ) );
// create JSplitPane with horizontal split (side-by-side)
// and add WebBrowserPanes with JScrollPanels
JSplitPane splitPane = new JSplitPane(
    JSplitPane.HORIZONTAL_SPLIT,
    new JScrollPane( favoritesBrowserPane ),
    new JScrollPane( browserPane ) );
// position divider between WebBrowserPanes
splitPane.setDividerLocation( 210 );
// add buttons for expanding/contracting divider
splitPane.setOneTouchExpandable( true );
// lay out WebBrowser components
Container contentPane = getContentPane();
contentPane.add( toolBar, BorderLayout.NORTH );
contentPane.add( splitPane, BorderLayout.CENTER );
}
// execute application
public static void main( String args[] ) {
    FavoritesWebBrowser browser = new FavoritesWebBrowser();
    browser.setDefaultCloseOperation( EXIT_ON_CLOSE );
    browser.setSize( 640, 480 );
    browser.setVisible( true );
} }

```

HTML file containing a list of favorite URLs.

The first argument indicates that the JSplitPane should display its child components side by side. A vertical-split would display the two components one on top of the other. The second two arguments are the components to be divided in the JSplitPane.

Sets the position of the divider between the two components.

Adds two buttons to the divider to allow the user to expand or contract the divider to one side or the other with a single click.



Favorites menu in JSplitPane

Buttons for expanding and contracting the split pane.

Favorite Sites

- [CNT 4714](#)
- [CGS 2585](#)
- [java.sun.com](#)
- [developer.java.sun.com](#)
- [Google](#)
- [localhost:8080](#)
- [localhost:8081](#)

UCF

CNT 4714 - Enterprise Computing - Spring 2010

Tuesday & Thursday 10:30-11:45 am ENG2 105

Instructor: [Dr. Mark Llewellyn](#)
Office: HEC 236
Office Hours: M & W 2:30-4:30 pm and T & TH 1:00-3:00 pm
(407) 823-2790
Email to: markl@cs.ucf.edu

TA Information
TBA
Office Hours: please email for appointment
Email: (Please use subject: CNT 4714) markl@cs.ucf.edu

[Course Calendar](#)

Two separate panes in the JSplitPane



JTabbedPane Component

- JTabbedPane presents multiple components in separate tabs, which the user navigates between using a mouse or the keyboard.
- The example application `TabbedPaneWebBrowser` uses a JTabbedPane to enable a user to browse multiple webpages at one time within a single application window.
- The user invokes an `Action` to add a new `WebBrowserPane` to the JTabbedPane. Each time the user adds a new `WebBrowserPane`, the JTabbedPane creates a new tab and places the `WebBrowserPane` in this new tab.



TabbedPaneWebBrowser Class

```
// TabbedPaneWebBrowser.java
// TabbedPaneWebBrowser is an application that uses a
// JTabbedPane to display multiple Web browsers.
// Java core packages
import java.awt.*;
import java.awt.event.*;
// Java extension packages
import javax.swing.*;

public class TabbedPaneWebBrowser extends JFrame {

    // JTabbedPane for displaying multiple browser tabs
    private JTabbedPane tabbedPane = new JTabbedPane();

    // TabbedPaneWebBrowser constructor
    public TabbedPaneWebBrowser()
    {
        super( "JTabbedPane Web Browser" );

        // create first browser tab
        createNewTab();

        // add JTabbedPane to contentPane
        getContentPane().add( tabbedPane );
    }
}
```



```
// create File JMenu for creating new browser tabs and exiting application
JMenu fileMenu = new JMenu( "File" );
fileMenu.add( new NewTabAction() );
fileMenu.addSeparator();
fileMenu.add( new ExitAction() );
fileMenu.setMnemonic( 'F' );

JMenuBar menuBar = new JMenuBar();
menuBar.add( fileMenu );
setJMenuBar( menuBar );
} // end TabbedPaneWebBrowser constructor

// create new browser tab
private void createNewTab()
{
    // create JPanel to contain WebBrowserPane and WebToolBar
    JPanel panel = new JPanel( new BorderLayout() );

    // create WebBrowserPane and WebToolBar
    WebBrowserPane browserPane = new WebBrowserPane();
    WebToolBar toolBar = new WebToolBar( browserPane );

    // add WebBrowserPane and WebToolBar to JPanel
    panel.add( toolBar, BorderLayout.NORTH );
    panel.add( new JScrollPane( browserPane ), BorderLayout.CENTER );
}
```



```

// add JPanel to JTabbedPane
tabbedPane.addTab( "Browser " + tabbedPane.getTabCount(), panel );
}
// Action for creating new browser tabs
private class NewTabAction extends AbstractAction {
    // NewTabAction constructor
    public NewTabAction()
    {
        // set name, description and mnemonic key
        putValue( Action.NAME, "New Browser Tab" );
        putValue( Action.SHORT_DESCRIPTION, "Create New Web Browser Tab" );
        putValue( Action.MNEMONIC_KEY, new Integer( 'N' ) );
    }
    // when Action invoked, create new browser tab
    public void actionPerformed( ActionEvent event )
    {
        createNewTab();
    }
}
// Action for exiting application
private class ExitAction extends AbstractAction {
    // ExitAction constructor
    public ExitAction()
    {
        // set name, description and mnemonic key
        putValue( Action.NAME, "Exit" );
        putValue( Action.SHORT_DESCRIPTION, "Exit Application" );
        putValue( Action.MNEMONIC_KEY, new Integer( 'x' ) );
    }
}

```



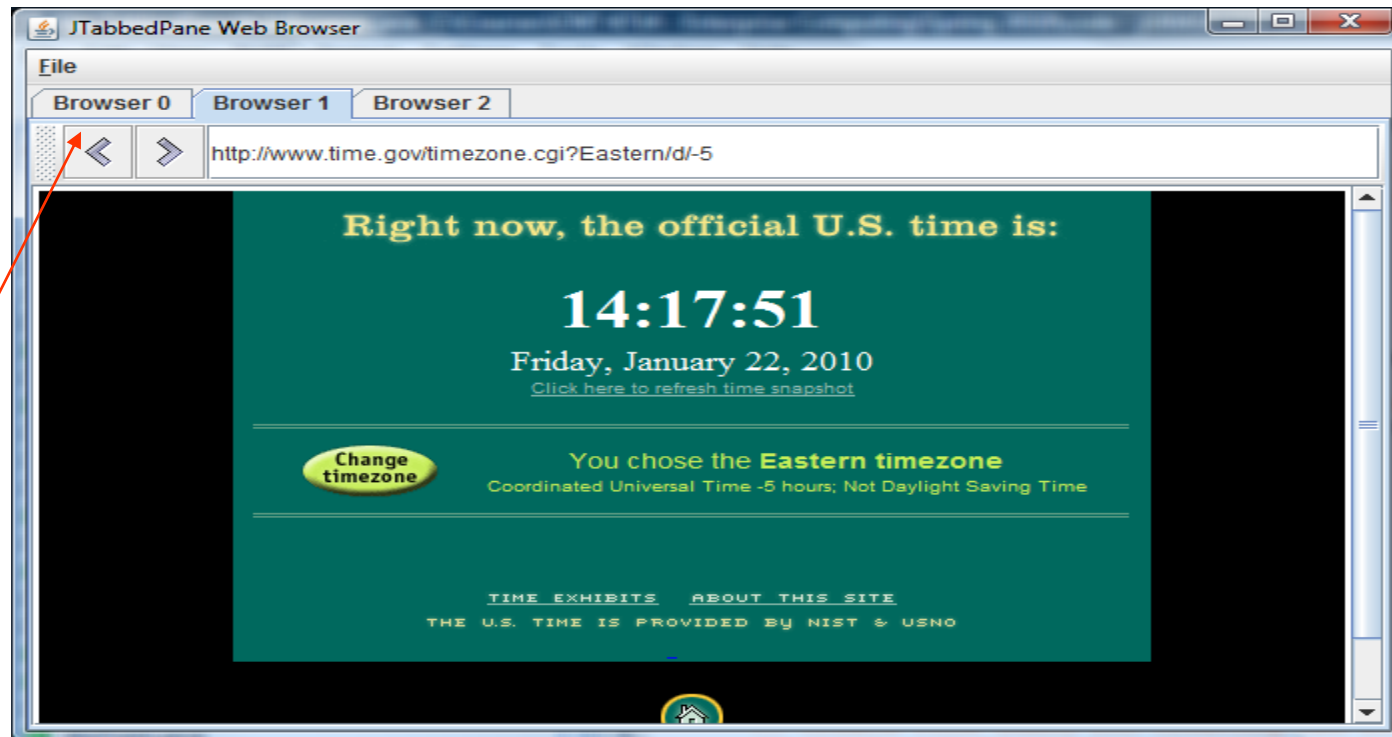
// when Action invoked, exit application

```
public void actionPerformed( ActionEvent event )  
{    System.exit( 0 );    }  
}
```

// execute application

```
public static void main( String args[] ) {  
    TabbedPaneWebBrowser browser = new TabbedPaneWebBrowser();  
    browser.setDefaultCloseOperation( EXIT_ON_CLOSE );  
    browser.setSize( 640, 480 );  
    browser.setVisible( true );  
}  
}
```

Example with
three tabbed
browsers active.



Drag and Drop

- Drag and drop is a common way to manipulate data in a GUI. Most GUIs emulate real-world desktops, with icons that represent the objects on a virtual desk.
- Drag and drop enables users to move items around the desktop and to move and copy data among applications using mouse gestures.
- A **mouse gesture** is a mouse movement that corresponds to a drag and drop operation, such as dragging a file from one folder location and dropping the file into another folder.
- Two Java APIs enable drag and drop data transfer between applications.



The Data Transfer API and Drag and Drop API

- The data transfer API – package `java.awt.datatransfer` – enables copying and moving data within a single application or among multiple applications.
- The drag and drop API enables Java applications to recognize drag and drop gestures and to respond to drag and drop operations.
- A drag and drop operation uses the data transfer API to transfer the data from the **drag source** to the **drop target**. The application which is the drop target would use the drag and drop API to recognize that a drag and drop operation occurred and would use the data transfer API to retrieve the data transferred through the drag and drop operation.



A Drag and Drop Version of Our WebBrowser

- The last example in this section of notes presents a drag and drop version of the web browser that we have been developing.
- In this case the application DnDWebBrowser is an extension of our original web browser that also allows the user to drop a file onto the WebBrowserPane to view the file contents.
 - The user could drag and drop an HTML file from the host computer's desktop (or other location) and drop the file on the WebBrowserPane to render the HTML.
 - The second method would be to open an HTML file containing URLs, then select a specific URL to drag and drop onto the web browser's tool bar. Then from within the web browser, the user clicks the window and the web site contents are displayed.



A Drag and Drop WebBrowser Example

```
// DnDWebBrowser.java
// DnDWebBrowser is an application for viewing Web pages using drag and
// Java core packages
import java.awt.*;
import java.awt.dnd.*;
import java.awt.datatransfer.*;
import java.util.*;
import java.io.*;
import java.net.*;
// Java extension packages
import javax.swing.*;
import javax.swing.event.*;

public class DnDWebBrowser extends JFrame {
    private WebToolBar toolBar;
    private WebBrowserPane browserPane;
    // DnDWebBrowser constructor
    public DnDWebBrowser()
    {
        super( "Drag-and-Drop Web Browser" );
        // create WebBrowserPane and WebToolBar for navigation
        browserPane = new WebBrowserPane();
        toolBar = new WebToolBar( browserPane );
        // enable WebBrowserPane to accept drop operations, using
        // DropTargetHandler as the DropTargetListener
        browserPane.setDropTarget( new DropTarget( browserPane,
            DnDConstants.ACTION_COPY, new DropTargetHandler() ) );
    }
}
```

Create a
WebBrowserPane
and a WebToolBar

Create a drop target within
the browserPane object.
The first argument is the
GUI component onto which
the user can drop objects.
The second argument is
the type of dnd operations
supported. Third argument
is the listener to be notified
of dnd operation events.



```

// lay out WebBrowser components
Container contentPane = getContentPane();
contentPane.add( toolBar, BorderLayout.NORTH );
contentPane.add( new JScrollPane( browserPane ),
    BorderLayout.CENTER );
}
// inner class to handle DropTargetEvents
private class DropTargetHandler implements DropTargetListener {
    // handle drop operation
    public void drop( DropTargetDropEvent event )
    {
        // get dropped Transferable object
        Transferable transferable = event.getTransferable();
        // if Transferable is a List of Files, accept drop
        if ( transferable.isDataFlavorSupported( DataFlavor.javaFileListFlavor ) ) {
            // accept the drop operation to copy the object
            event.acceptDrop( DnDConstants.ACTION_COPY );
            // process list of files and display each in browser
            try {
                // get List of Files
                java.util.List fileList =
                    ( java.util.List ) transferable.getTransferData( DataFlavor.javaFileListFlavor );
                Iterator iterator = fileList.iterator();
            }
        }
    }
}

```

DropTargetHandler implements interface DropTargetListener to listen for dnd operation events related to a DropTarget.

Handle drop event

Get the transferable object the user dropped.

Represents a list of files



```
while ( iterator.hasNext() ) {  
    File file = ( File ) iterator.next();  
    // display File in browser and complete drop  
    browserPane.goToURL( file.toURL() );  
}  
// indicate successful drop  
event.dropComplete( true );  
}  
// handle exception if DataFlavor not supported  
catch ( UnsupportedOperationException flavorException ) {  
    flavorException.printStackTrace();  
    event.dropComplete( false );  
}  
// handle exception reading Transferable data  
catch ( IOException ioException ) {  
    ioException.printStackTrace();  
    event.dropComplete( false );  
}  
}  
// if dropped object is not file list, reject drop  
else  
    event.rejectDrop();  
}
```

Drag and drop operation was successful so close with argument *true*.

Dropped object was not a list of files so do not accept the dropped object.



```

// handle drag operation entering DropTarget
public void dragEnter( DropTargetDragEvent event )
{
    // if data is javaFileListFlavor, accept drag for copy
    if ( event.isDataFlavorSupported(
        DataFlavor.javaFileListFlavor ) )
        event.acceptDrag( DnDConstants.ACTION_COPY );
    // reject all other DataFlavors
    else
        event.rejectDrag();
}
// invoked when drag operation exits DropTarget
public void dragExit( DropTargetEvent event ) { }

// invoked when drag operation occurs over DropTarget
public void dragOver( DropTargetDragEvent event ) { }

// invoked if dropAction changes (e.g., from COPY to LINK)
public void dropActionChanged( DropTargetDragEvent event ) { }
} // end class DropTargetHandler
// execute application
public static void main( String args[] ) {
    DnDWebBrowser browser = new DnDWebBrowser();
    browser.setDefaultCloseOperation( EXIT_ON_CLOSE );
    browser.setSize( 640, 480 );
    browser.setVisible( true );    } }

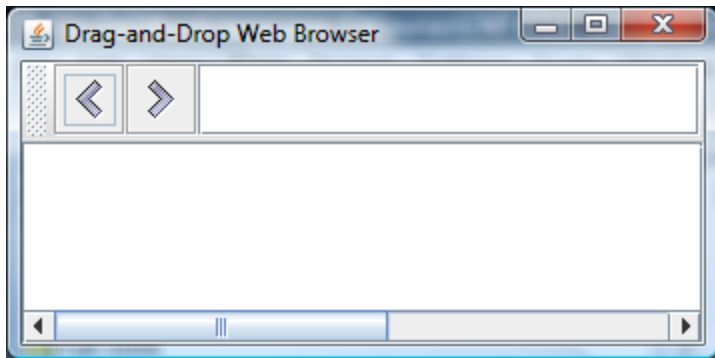
```

Invoked when the dnd operation enters a DropTarget

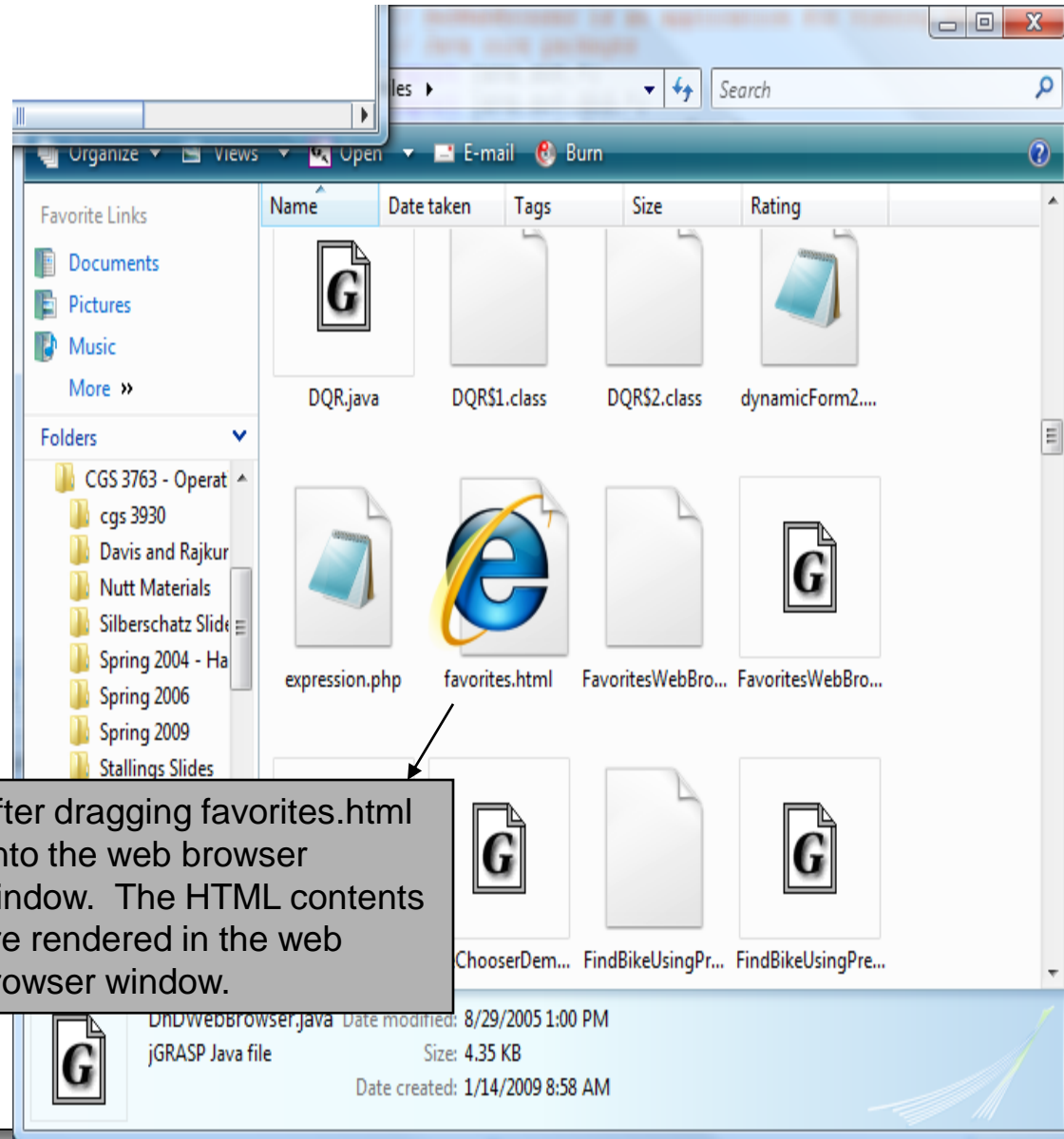
DnDConstants include ACTION_COPY for copying a dragged object.. ACTION_MOVE for moving a dropped object. ACTION_LINK for creating a link to an object.

Interface methods that do nothing in this case.





Initial Browser Window



After dragging favorites.html onto the web browser window. The HTML contents are rendered in the web browser window.



Drag-and-Drop Web Browser

http://www.cs.ucf.edu/courses/cnt4714/spr2010

 **UCF**

CNT 4714 - Enterprise Computing - Spring 2010

Tuesday & Thursday 10:30-11:45 am ENG2 105

Instructor: [Dr. Mark Llewellyn](#)
Office: HEC 236
Office Hours: M & W 2:30-4:30 pm and T & TH 1:00-3:00 pm
(407) 823-2790
Email to: markl@cs.ucf.edu

TA Information
TBA
Office Hours: please email for appointment
Email: (Please use subject: CNT 4714) markl@cs.ucf.edu

[Course Calendar](#)

[Syllabus](#)

Favorite Sites

- [CNT 4714](#)
- [CGS 2585](#)
- [java.sun.com](#)
- [developer.java.sun.com](#)
- [Google](#)
- [localhost:8080](#)
- [localhost:8081](#)

User opens favorites.html in another window to display the URLs contained in the file. Then a specific URL is selected and dragged onto the web browser tool bar and dropped. Once the URL is located in the window, the user clicks on this link and the web content is displayed in the browser window.

